

Christchurch Society of Woodturners

e - newsletter

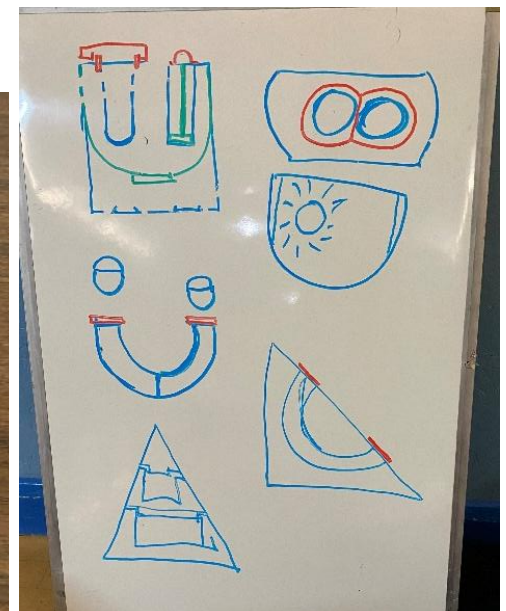
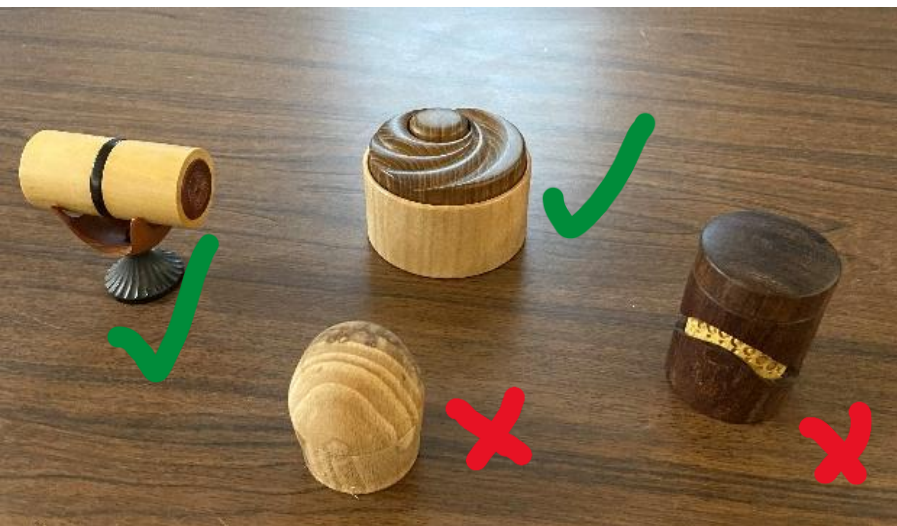
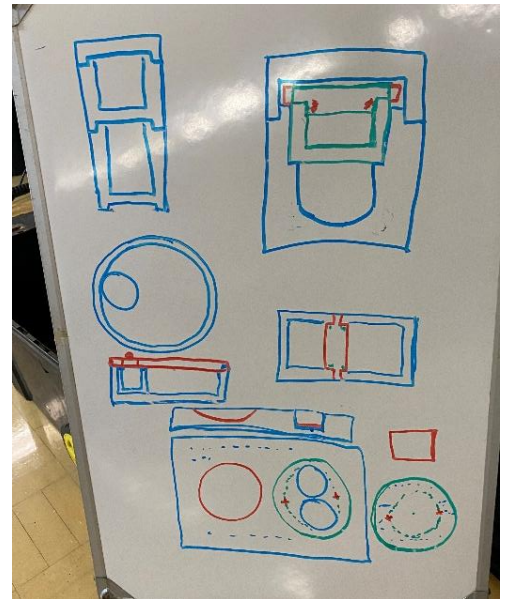
September 2025

August Meeting Report

Thanks to Paul for another excellent demo introducing a complex challenge for us all to have a go at for the next competition. I say complex, but there are alternatives to the theme which will allow everyone to have a go. A double box – two usable compartments with one or two lids. Not a ‘Russian doll’ or lined box – but a box sitting on a shoulder within a box, perhaps offset, or even a ‘Jason Breach’ arch – lots of ideas given - and details of the demo are being written up by Rick (thank you!) on the website for your guidance. Paul’s demo piece was a box in a box, both with a lid.



Here are Paul’s suggestions from the demo so you can get an idea of what is in line with the competition theme. Paul is not demonstrating next meeting, so perhaps his threats of rigorous scrutineering might be true?!



Appraisal / Display Table

Cedric Boyns



Rhob Williams



David Game



Merls De Pearle



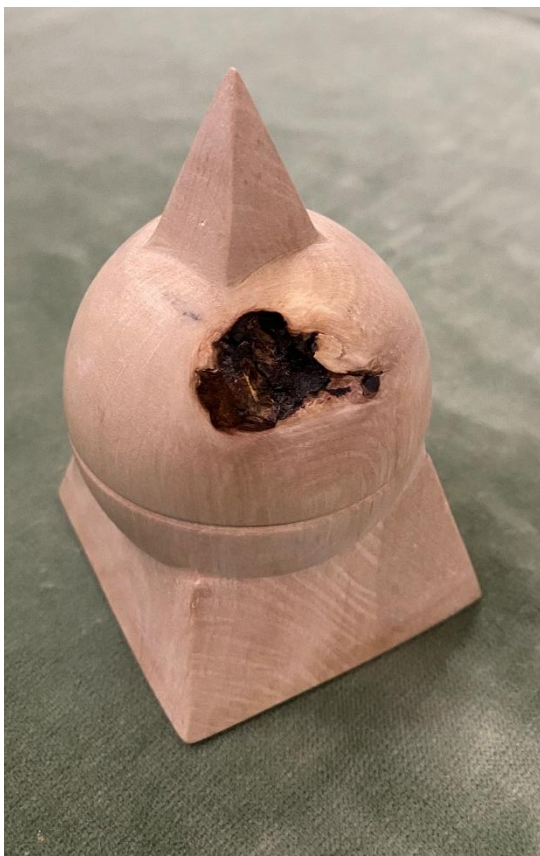
Jayne Fisher



Terry Rae



Andy Ogilvie



Paul Reeves



From a Workshop Near You

Many thanks to Rhob Williams for this account of a resin project – a tannoy speaker for a mobile phone - which nicely follows on from the resin presentation on the workshop night and the speaker being brought in for display at the last meeting:

My first job was to turn down the Birch Burr blank to fit into the mould (in this case a mixing pot). To avoid waste, I prepared a few extra moulds to use up any extra resin.

The resin was prepped and the excess bubbles were collected around the mixing stick by a warm water bath. The bubbles were then popped with the wave of a blow torch. There was 400ml in the 2.4L pot for the tannoy speaker. All the blanks were sealed with brushed-on cellulose sanding sealer prior to adding resin.

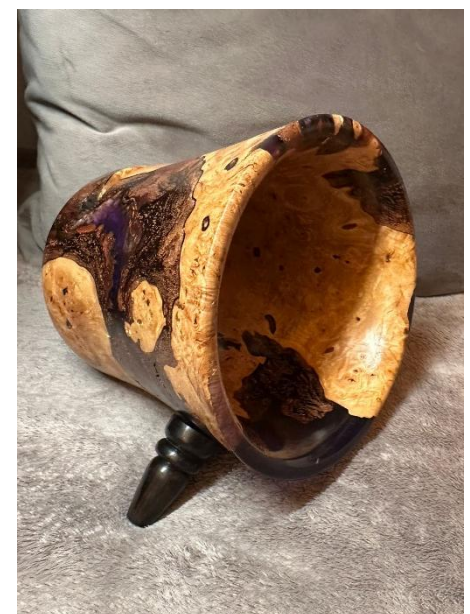
The moulds went into the pressure pot at 50psi for 24 hours then re-poured if the level went down too much. Tricky with some of the colourings! Rinse and repeat.

The form was then mounted with a hardwood disc affixed with epoxy to turn a tenon for chucking. This reduces wastage. I shaped and hollowed in the usual manner, with a light pass using negative-rake tools to smooth. Sanding started at 240 (lower grit than this leaves scratches in the resin that are hard to remove), down to 600, then 2 wet sandings with true grit and true grit superfine. Finally, a coat of T cut, followed with a good buff of Tripoli and carnauba wax to finish.

Cutting the slot to hold the phone was done with a router mounted on a table attached to the lathe.

A couple of legs were then turned, and fitted into drilled holes. Job done.

Great project Rhob, thanks for sharing.



Internet

Vic found this Japanese turner showing an interesting mix of old and new techniques and tools – some nice wood grain too.

<https://youtu.be/m6Y-vsUp7Ng>

It's not Woodturning but

I was called from my workshop by my wife with a sense of urgency indicating that I should respond more quickly than usual – to be greeted by this impressive sight at the far end of the garden. The Sparrowhawk is a regular visitor as we feed the birds but we have never managed to get a picture like this. It sat in the garden for over an hour plucking and eating the pigeon before stashing it in the undergrowth.

Isn't nature sweet and cute?!



Out and about

The club's final show of the year was Ellingham. A very pleasant day out for Paul, Alan and Andy who made a number of contacts for potential membership and promoted woodturning generally. Thanks to those who came to say hello – not as much space as Mudeford but great to see you.



Masters of the Lathe II at Yandles was very busy, not surprising given the list of star turners who had been invited to demonstrate. Well worth a visit next year to see a wide range of turning exploits and a chance to mooch around the store and woodshed.

The Oak Fair at Stock Gaylard was also busy – cart horses, re-enactments, traditional crafts etc. On the left is your Chairman having a go on a treadle lathe

Change to Programme

September's meeting will be Andy with his Salt Cellar and Spoon demo – the Dorset Coppice group demo will now be in February 26.

Have a chuckle, then take the quiz

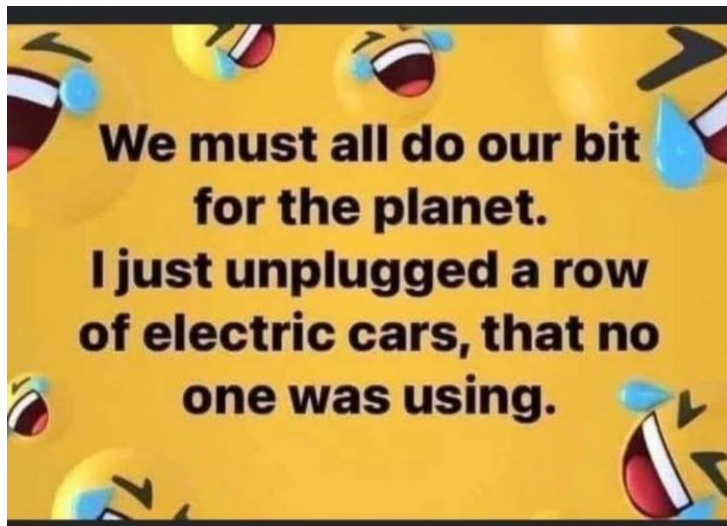


What went wrong?

(Answers from Vic Russell at the next meeting if you need them)

Spot the mistake, and why it is an unusual chuck?

Pick of the Pics



Single Use Fireplace

Contributions to this e-newsletter are very welcome as are suggestions and comment. I am particularly interested in the story of projects which members have taken on. Please take a couple of photos, scribble down some background notes and I'll put it all together for the newsletter.

Editor: Andy Ogilvie e-news@christchurchwoodturners.org.uk