

# Christchurch Society of Woodturners

## e - newsletter

## October 2024

### Meeting Report

Thanks to Alan, Nick, Merls and Paul for their demonstration contributions on smokers, carving, lace bobbins and Christmas fayre respectively. The workshops generated a great deal of interest / discussion and gave ideas to copy or adapt – I look forward to the next few display tables as items inspired by the evening appear.

Alan laid out a comprehensive display of the parts to make a smoker and talked through the turning and assembly. The original idea is from Germany but Alan picked it up from Colwin Way.



Nick described the process for embellishing a platter with carving and colouring – technique, patience and a steady hand required!



Merls specialises in lace bobbins which are made in distinguishable pairs, often with decoration which helps weight the bobbins for ease of use. He uses a small lathe – partly because he has a small workshop, but also because it is portable and good for the detail work of lace bobbin production.



Paul brought in a number of different Christmas ideas to inspire some early preparation. If you have a favourite Christmas novelty please bring it in so that others can see it.



**Straight from the Tool Competition – Table A**



1<sup>st</sup> Paul Reeves



=2<sup>nd</sup> Alan Brooks



=2<sup>nd</sup> Andy Ogilvie



4<sup>th</sup> Rhob Williams



Nick Jazwinski

**Straight from the Tool Competition – Table B**



1<sup>st</sup> Jane Wild



2<sup>nd</sup> Nigel Batten

**Appraisal / Display Table**



Rhob Williams brought in a range of work including his ongoing efforts to refine his hollowing. Interesting way to hold / reverse a pendant bottom right.





Phil Walker's natural look lidded box



Allan Rae's carefully designed and pyrographed undercut-rim bowl



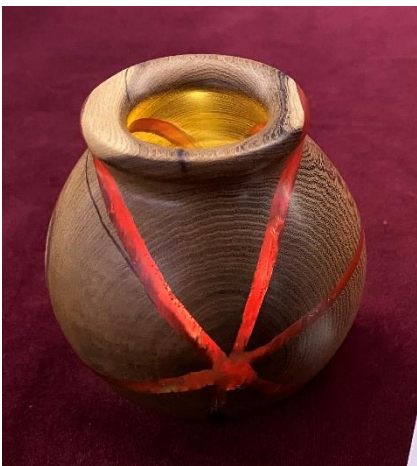
Jane Wild's natural edge bowl



Paul Reeves' 'Golden Ratio' callipers which could have been used for his Walnut bowl.



Andy Ogilvie's resin starred night light and an Oak bowl



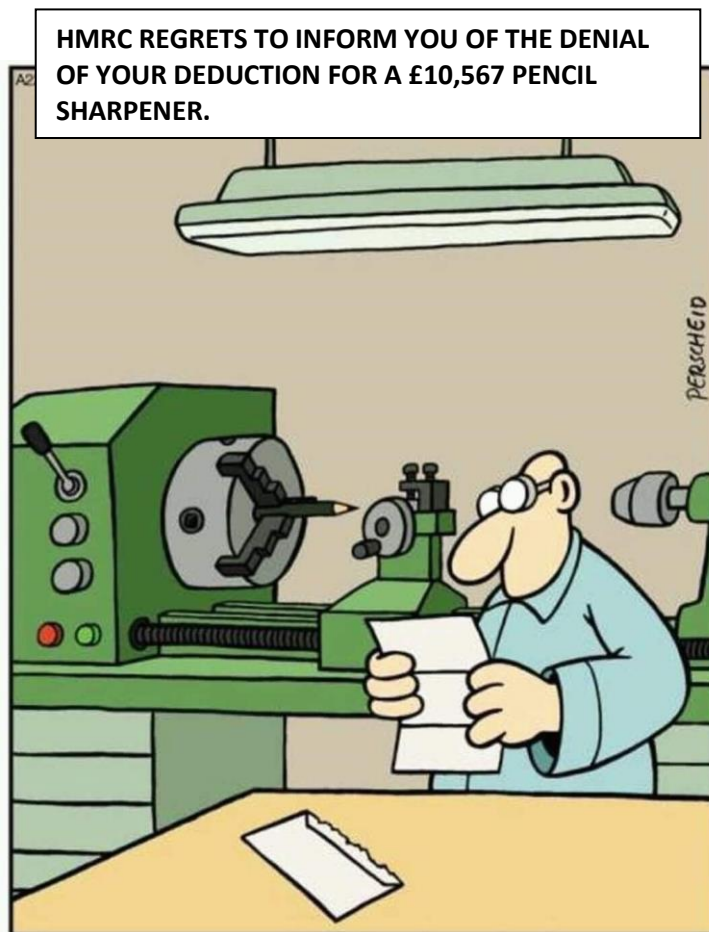
## Internet

Vic Russell: For those of you who were looking forward to the demo on the Hope threading jig – here's a little taster. About 1 minute in, he gives a safe way of holding a Jacobs chuck which you might find interesting <https://youtu.be/7-fNZA6Z9TI?si=nzqghzxyrVB8FPtj>

## Pick of this Month's Pics

This tree is an Oak in the shape of a typical grazed parkland tree. Flat underneath where the cows have trimmed the shoots and branches.

1.5m diameter          Notsall House, Nr Doncaster



**Contributions** to this e-newsletter are very welcome as are suggestions and comment. I am particularly interested in the story of projects which members have taken on. Please take a couple of photos, scribble down some background notes and I'll put it all together for the newsletter.

Editor: Andy Ogilvie          [e-news@christchurchwoodturners.org.uk](mailto:e-news@christchurchwoodturners.org.uk)