

Christchurch Society of Woodturners

e - newsletter

August 2023

July Workshop Evening

Thanks to Andy for a brief insight into the machinery and techniques of ornamental turning, a specialist area of wood turning resulting in intricate decorative work – sometimes all over the workpiece but often used to give a highlight to ‘plain-turned’ items. A range of examples of ornamental work were on display, together with some of the lathe accessories used to make the buttons featured. Andy then continued to show an accessory for a normal lathe which can reproduce a limited number of ornamental effects to make, for example, wine bottle coasters.



In other workshops Rick answered queries with regard to lathe maintenance, Paul was showing various decorative finishes involving pyrography, paint and a Dremel, and Clive was demonstrating the use of a specialist mini lathe for pen-turning. Thanks to all for their time both on the night and in preparation.



Kitchen Item Competition – Table A



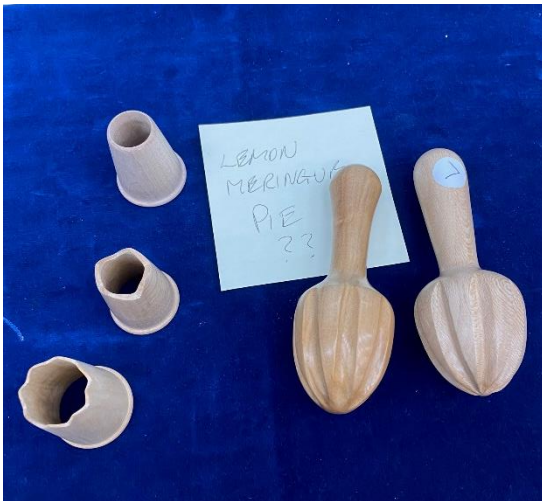
1st Alan Brooks



2nd Andy Ogilvie



3rd Nick Jazwinski



4th Paul Reeves



David Game

Bill Gibson

Rick Patrick



Kitchen Item Competition – Table B



1st Rhob Williams



2nd Nick Goss



3rd Joe Van Wyk



4th Ian McClure

Ian Wright



Clive Potter

Nigel Batten



Appraisal / Display Table

Thanks to all for sharing their work (and for an excellent number of competition entries)



Nick Jazwinski



David Game



David Game



Clive Potter



Joe Van Wyk

Clive Potter

Andy Ogilvie

Rhob Williams



Internet

This month's suggestions from Vic:

Exotic Hardwoods

<https://exotichardwoodsukltd.com/product-category/woodturning-blanks/>

The Art of Woodturning PDF

<https://ia600803.us.archive.org/5/items/TheArtOfWoodworkingWoodTurning1994/The%20Art%20Of%20Woodworking%20Wood%20Turning%201994.pdf>

Worldwide Woodturners

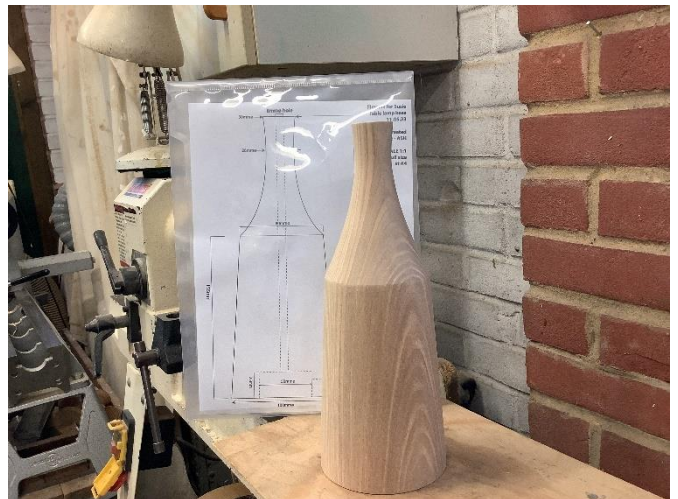
<https://worldwidewoodturners.org>

Beginners guide to wood turning tools

<https://www.axminstertools.com/ideas-advice/beginners-guide-to-woodturning-tools/>

From the Post-Retirement Workshop

Paul: Here are three lamp bases for a Bournemouth fabric designer to show off her lampshade samples at Bovey Tracey craft fair. The bases pictured were re mounted and the neck shape slightly trimmed after I made a profile from a spare plan and found that the curve wasn't quite right - too heavy in the lower section. NB to self, and anyone trying to duplicate items, make the profile first!!



Chairman's Garden Party

The CSW social was bookended by showers but the sunny bit in between was great. Thanks to Mrs Chairman who does all the gardening and to all those who attended.

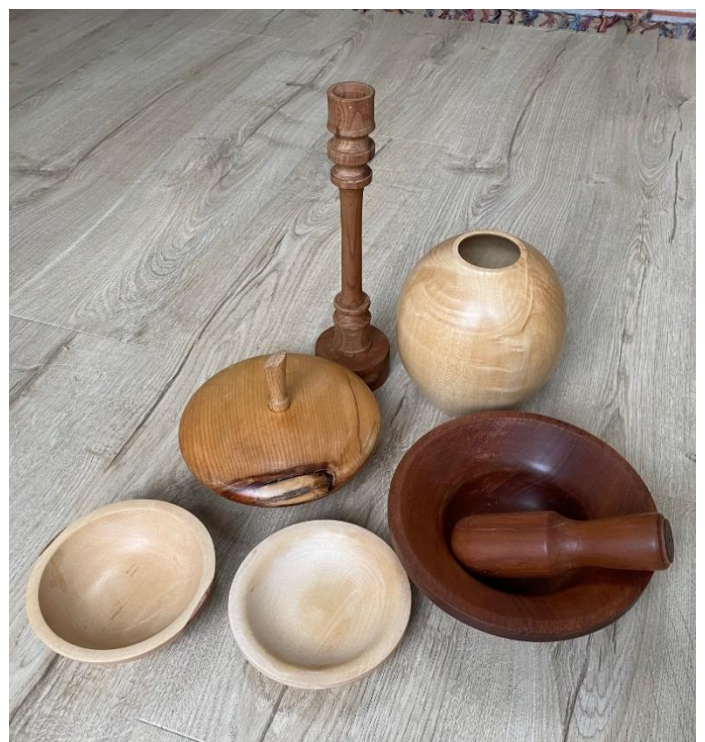


Introducing

David Jenner worked more than his fair share of years as a toolmaker, latterly in the filtration industry making bespoke items and specialising in grinding. Six years ago he saw Clive Potter demonstrating at the New Forest show and was encouraged to take up woodturning. David says it is a totally different experience to the precision of working metal as wood gives you more freedom but requires more patience with the tools to, literally, avoid a catch. In both disciplines he enjoys the planning and problem-solving aspects. He has a Perform lathe and a French Kity 664 lathe in a dedicated workshop with paraphernalia hidden in many drawers and boxes. He likes pen-making and hollowing. Away from the lathe he enjoys walking, sea and fresh-water fishing and has covered many miles on a road bike. He still enjoys 'proper camping' – in a tent, and recommends air-pole tents, much more robust in a Welsh clifftop blow. David likes his food and taking a turn in the kitchen as the relief chef. He has very fond memories of a '76 Singer Vogue even though it sometimes baulked at going uphill as the fuel pipe blocked on a significant incline. David was seen last week on Mudeford quay, crabbing with the grandchildren – does that count as sea-fishing?



Examples of David's varied projects and skills



Mudeford Arts Festival

Thanks to Greta, Alan, Rick, Paul and Andy who gave up their weekend to promote the club. We made over £100 for club funds and more importantly, hope we have several people who are interested in joining the club. The photo was taken in a rare quiet moment but it gives an idea of the impressive display we were able to put on. Wherever you are, please make sure you are promoting woodturning and membership of CSW! Thanks, too, to those members who popped down to say hello. The Ellingham Show is our next chance to promote the club – see you there?



Pick of the Pics

Something old and gnarly in Paul's workshop (clue: in foreground). Vic was tempted to offer the opener for the 'kitchen items' competition, plus a sign from David and Geoff's workshop and a contribution from my wife!



Contributions to this e-newsletter are very welcome as are suggestions and comment. I am particularly interested in the story of projects which members have taken on. Please take a couple of photos, scribble down some background notes and I'll put it all together for the newsletter.

Editor: Andy Ogilvie e-news@christchurchwoodturners.org.uk