

Christchurch Society of Woodturners

e - newsletter

July 2023

June Meeting Report

Thanks to Paul for bringing in a wide range of kitchen items to spark your imagination for next month's competition and for producing a citrus squeezer and piping nozzle as demonstration pieces. A full account of the demo can be found on the club website – thanks Rick! July's competition is for an item you would find in a kitchen and can be anything from a spoon to a mug rack.



Competition 1 Revisited



Apologies for confusion over images in the vessel with a finial competition results in the last newsletter – by way of correction please re-look at entries from Trevor Elliott (left, table A, 3rd) and and Joe Van Wyk (right, Table B, 3rd). Credit where it's due and credit to both for very good work and their honesty in not wishing to claim credit falsely!



Appraisal / Display Table

Rising to the challenge of creating a bowl from a plank:



Nigel Batten



Nick Jazwinski

and two from Rob Williams



Also on display were a chopping board from Rick Patrick and some earrings and an acorn from Rob Williams



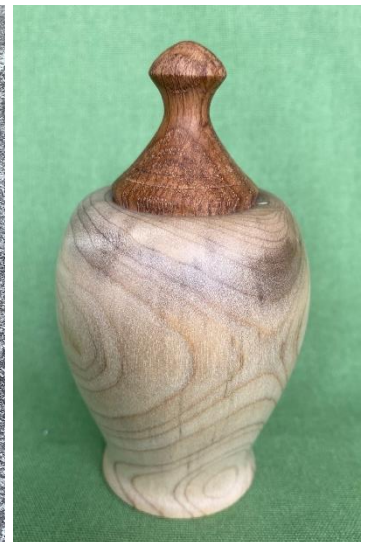
Internet

Tony Mercer found a very interesting professor, Seri Robinson, who specialises in wood science and wood art, and spalting in particular. Well worth a look: www.finewoodworking.com/author/seri-robinson

From a Workshop Near You

A recent commission for Paul was to make two 'rope travellers' for rope-making. They hold the groups of yarns separated until the winding action twists everything together and makes the rope.

Andy was gifted a piece of Magnolia (thanks Geoff) and opted for a curvy shape to show off the grain.



Next meeting

July's meeting is a workshop evening and will include ornamental turning (Andy), decorative finishes (Paul), pen making (Clive) and lathe maintenance (Rick). If you have a particular maintenance question / item please bring it along. Don't tell Rick, but this is the challenge Vic is going to set him!

PS: Vic is horrified at the thought that you might think these were his chucks!



Introducing

Paul Reeves has been a stalwart of the club since the early nineties when he first started turning. At the time the club had only been running for a few years and was heavily biased toward high standard competition work. Paul's development as a turner was shaped by this and he, in turn, won awards locally and nationally in the 2003 Axminster Show. (He used to enter competitions to get a free ticket to the shows!). He also started demonstrating and teaching quite early having honed his skills in lunch breaks and most evenings – he is a great believer in repetition, muscle memory, and regular practice to establish good, reliable habits. He uses VB36, LRE Graduate and Holtzapffel lathes, the latter being a high spec, 200 year old ornamental lathe originally owned by the 3rd Baronet of Basildon - acquired by Paul from a founder and ex-President of CSW, Ted Payne.

Hollowing, miniature work and hand-cut threads are a few of Paul's favoured aspects with his trusty 3/8 spindle gouge and Rolly Munro hollower. He talks of the challenge of understanding the processes in, for example, making a pastry cutter and enjoys the creative process of overcoming and working with the quirks of a particular piece of wood.

Paul is an accomplished guitarist, playing electric, folk and classical in several bands through the 80s and 90s playing rock covers and a fair amount of his / their own material in pubs and clubs. He even played a Gibson guitar called 'The Paul'. His last impromptu performance on the rim of the Grand Canyon. But music's loss was woodturning's gain.

He enjoys driving – not the Everton Nurseries (for whom he was Production Manager and maintenance guru) works lorry or van but motorbikes and a series of interesting cars, from his first flared wheel arch Austin Mini to Porches, Jags and a VR6 Golf.

He's a happy man with a glass of red, barbecued pork belly and of course, Greta by his side.

Oh, and thanks for being the club wood guru / storeman!



Wood Collection

Paul: This is part of the first trailer load of Ash. Two or three more loads to come when I've planked it all up. The butt is 48" across and approx 200yrs old. The bits that we are cutting are the branches. The longer planks are 6' 6" long. Trying to cut to show max figure.

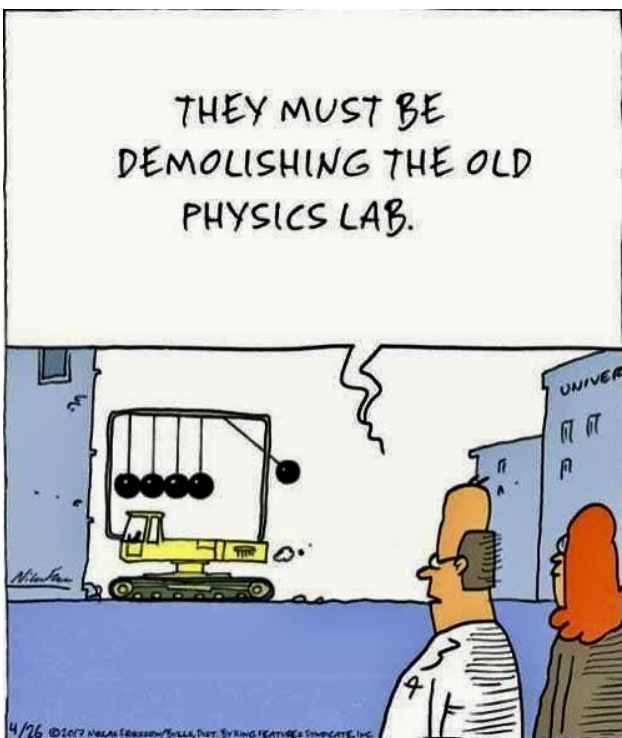


Just a Thought

Stop worrying about what might go wrong – get excited about what might go right!

This month's Pick of the Pics

One for the scientists among you and a sign seen in Rob Branson's workshop. It's also the time of year when CSW get out and about so I thought a timely reminder about passing on pearls of wisdom might be in order – hope to see you at Mudeford Arts Festival or the Ellingham Show, both a good day out.



Contributions to this e-newsletter are very welcome as are suggestions and comment. I am particularly interested in the story of projects which members have taken on. Please take a couple of photos, scribble down some background notes and I'll put it all together for the newsletter.

Editor: Andy Ogilvie e-news@christchurchwoodturners.org.uk