

Christchurch Society of Woodturners

e - newsletter

September 2022

August Meeting

Thanks again to Paul for the excellent demo on 'Puzzles and Tricks' – and to Rick for his method summary on the website covering the disappearing ball, the cannon / ramrod combo and the puzzling pistons. Andy also showed both complete and disassembled cryptex puzzles and some interlocking rings - a wide variety of ideas this month so we are hoping for a bumper entry for both competitions! Good luck!



Sleight of hand, thinking outside the piston / ramrod, methodical assembly and a sharp tap all required to make and use these puzzles and tricks.



Display / Appraisal Table

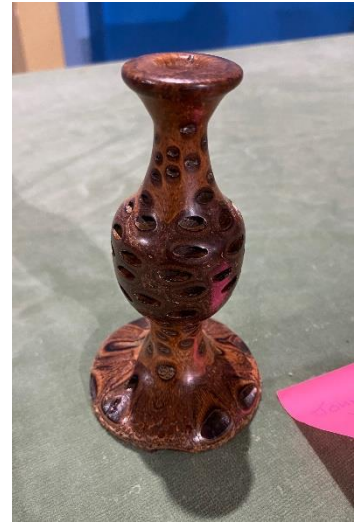
Thanks to all contributors – some skilful jointing / finishing, interesting woods, close fitting lids, deft hollowing and a boater which weighs as much as a straw one – even something for the tooth-fairy.



David Game



Phil Walker



John Williams



Paul Reeves



Terry Miles



Ian Wright



Joe Van Wyk

Internet

This month's suggestions from Vic:

Hemp and Tung Oil – a short article about these useful oils.

<https://www.realmilkpaint.com/blog/tips/tung-oil-vs-hemp-oil/#>

Bowl reversing article.

<http://www.davidreedsmith.com/Articles/BlueBowlReversing/BlueBowlReverse.pdf>

Another doughnut chuck.

<https://www.popularwoodworking.com/techniques/the-trapped-reverse-chuck/?fbclid=IwAR05haKEIFsOmXI6tZQNdaj-sD0ICVp1hLIfloWn571PMCwM97BJOw5AzWU>

Woodturners Resources, some good links.

<http://www.woodturnersresource.com/tpt/>

From the Diamond Geezers' Workshops

Vic Russell saw an interesting challenge on the net and produced a beautiful brass diamond using his metal lathe and milling machine. He shared his creation with me, knowing that I would appreciate the workmanship – but perhaps not anticipating that I would replicate his effort on the ornamental lathe with a tight grained piece of Box. Different machines but similar techniques, albeit suited to the material. Vic's is presented as it came off the lathe, whilst mine had a coat of sealer (but no abrasive as it would have destroyed the sharpness of the edges). The brass one is approx. 30mm and the Box approx. 40mm diameter.

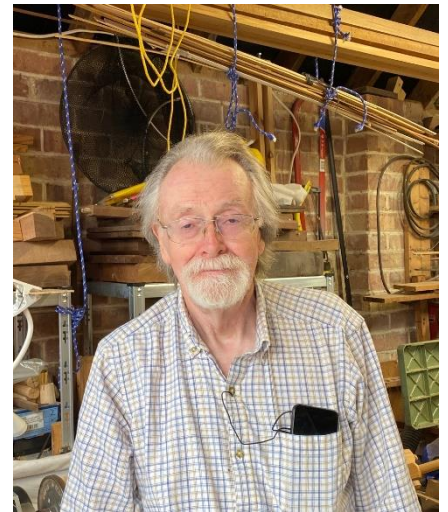


Lathe Undercarriage

Paul is keen to upgrade the lathe used for demonstrations and has a suitable replacement, but it needs to be made mobile for use in the hall – if anyone has the skills required to help design and manufacture an undercarriage for a lathe, please speak to Paul.

Introducing

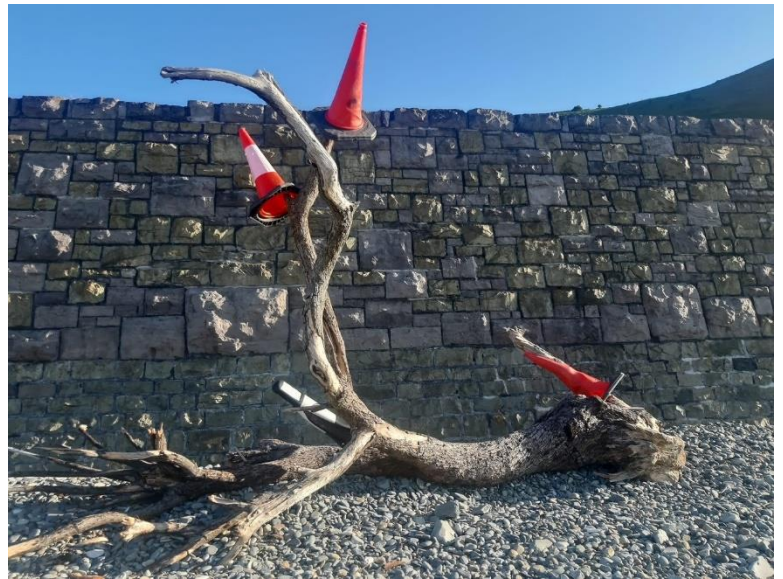
Ian Wright estimates that he has been turning for 40 years and a club member since the turn of the century. He was drawn to turning to make some handles for a woodwork project; his design skills led him to fix a piece of wood to a washing machine motor which was attached to a bench, and he then shaped the wood with whatever chisels he had lying around ... don't try this at home! Ian's rather more refined electronic systems design skills led to him being Technical Director of Penny and Giles Transducers, working successfully in the international aviation industry. His garage is full of bits and pieces custom-made for particular purposes and each club meeting you will benefit from his ongoing work with the club audio-visual system. He has a sturdy Draper variable speed lathe amongst other woodworking machinery and thinks the skew chisel is much underrated. His transportation history includes a noisy '49 BSA 250 motorbike, a '36 Morgan 3-wheeler and an early Mini which he coaxed around Morocco – via the Atlas Mountains to the edge of the Sahara and back. Sailing (cruising and dinghies) now occupies much of his time - perhaps a chance to catch a fish supper.



A selection of Ian's turning but also showing his more general interest in woodworking - and of course, that 3-wheeler! (Weymouth 1962).

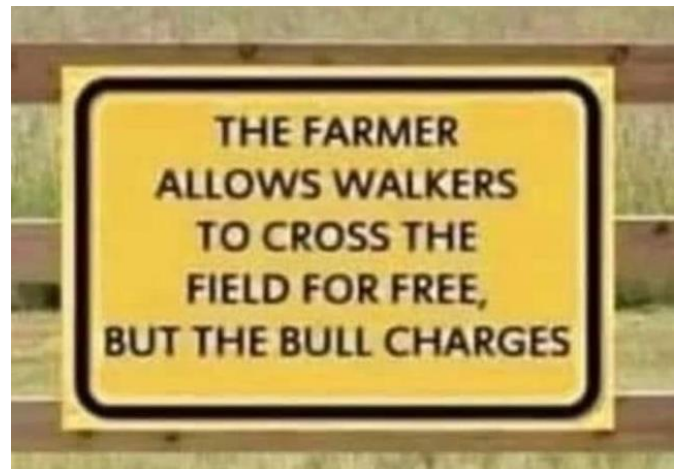
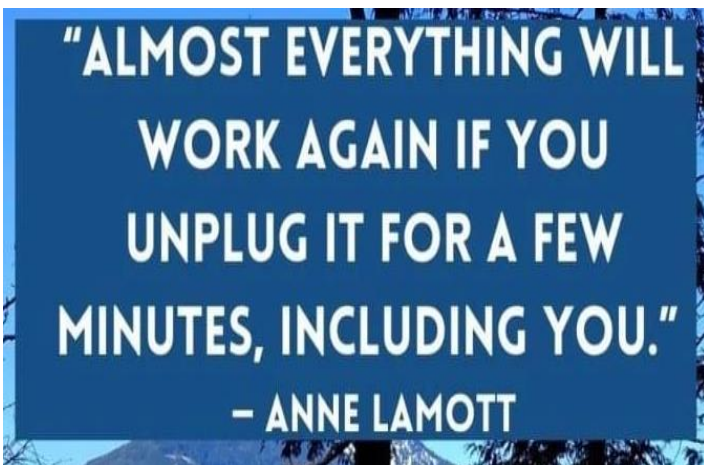


This Month's Pick of the Pics



Next time you describe yourself as a Luddite, remember the advantages of modern machinery! And do the cones make the tree evergreen or deciduous?

Just a Thought



Contributions to this e-newsletter are very welcome as are suggestions and comment. I am particularly interested in the story of projects which members have taken on. Please take a couple of photos, scribble down some background notes and I'll put it all together for the newsletter.

Editor: Andy Ogilvie e-news@christchurchwoodturners.org.uk